

## Liste des objectifs

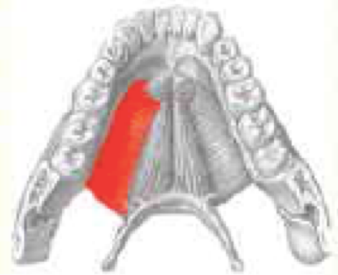
### Pharynx, langue, nerfs IX et X

- Muscles du plancher buccal : p. 1037-1038 [p. 1092- 1094]
- Muscles de la langue, leur innervation : p. 1039-1043 [p. 1095- 1100]
- Innervation sensitive de la langue : p. 1044-1045 [p. 1100- 1102]
- Glandes salivaires : situation, innervation : p. 863-864, 1046-1049 [p. 1102- 1105]
- Le pharynx :
  - Topographie : p. 988-995, 1049-1053 [p. 1040- 1048]
  - Innervation : p. 998-999 [p. 1051- 1052]
  - Vascularisation : p. 996-997, 1054-1055 [p. 1049- 1050]
- Territoire d'innervation des nerfs glossopharyngien (IX) et vague (X) : p. 851-853 [p. 899- 901]

## Les muscles du plancher buccal

**M. mylohyoideus** [The right and the left muscle together, secure the floor of the mouth in a plate-like shape.]

*N. mylohyoideus (N. mandibularis [V/3])*



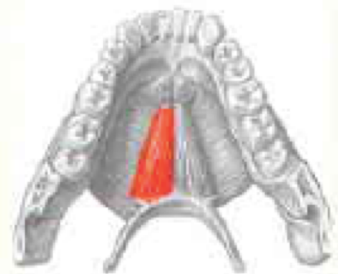
**O:** With a short tendon from the Linea mylohyoidea of the Mandibula

**I:** Raphe mylohyoidea, upper margin of the Corpus ossis hyoidei

**F:** Elevates the floor of the mouth and the tongue (as in swallowing), depresses the mandible, also elevates the hyoid bone, forms the muscular support for the tongue

**M. geniohyoideus** [The right and the left muscle are closely juxtaposed, only separated by a thin septum of connective tissue.]

*Rr. ventrales from C1-C2*

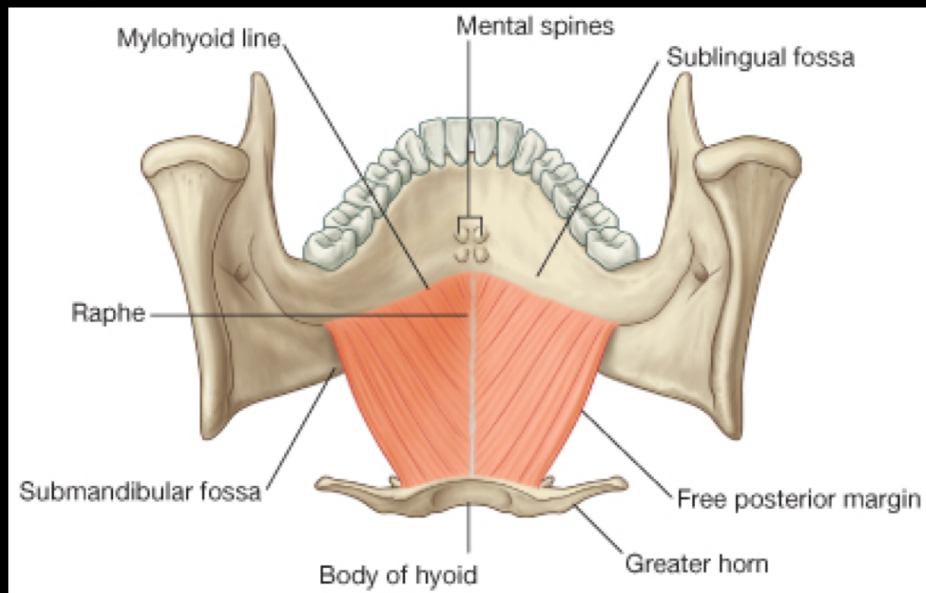


**O:** With a short tendon from the Spina mentalis of the Mandibula

**I:** Anterior surface of the Corpus ossis hyoidei

**F:** Supports the M. mylohyoideus in elevating the tongue, depresses the mandible, elevates the hyoid bone

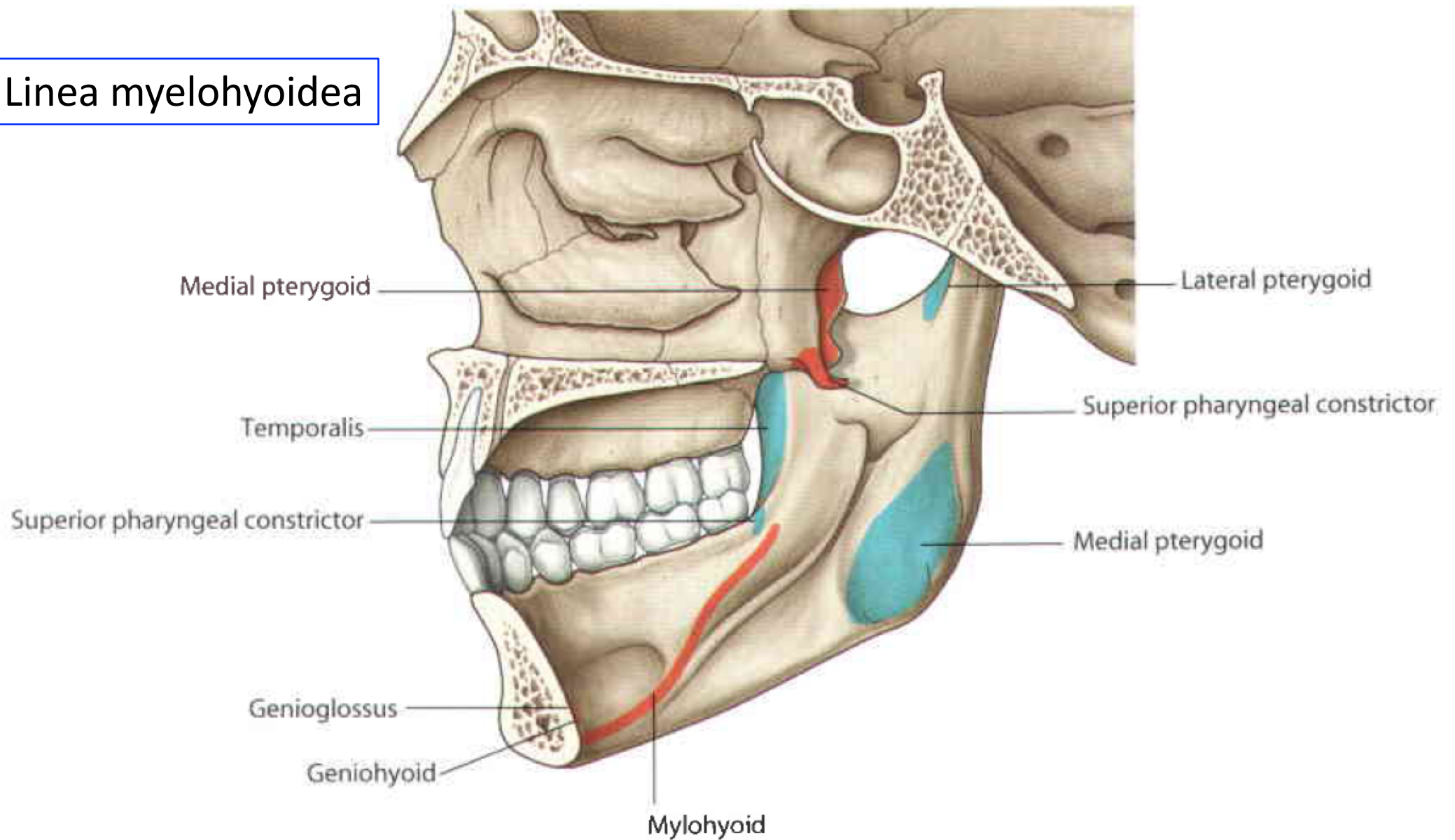
## Le plancher musculaire de la cavité buccale



Muscle mylo-hyoïdien

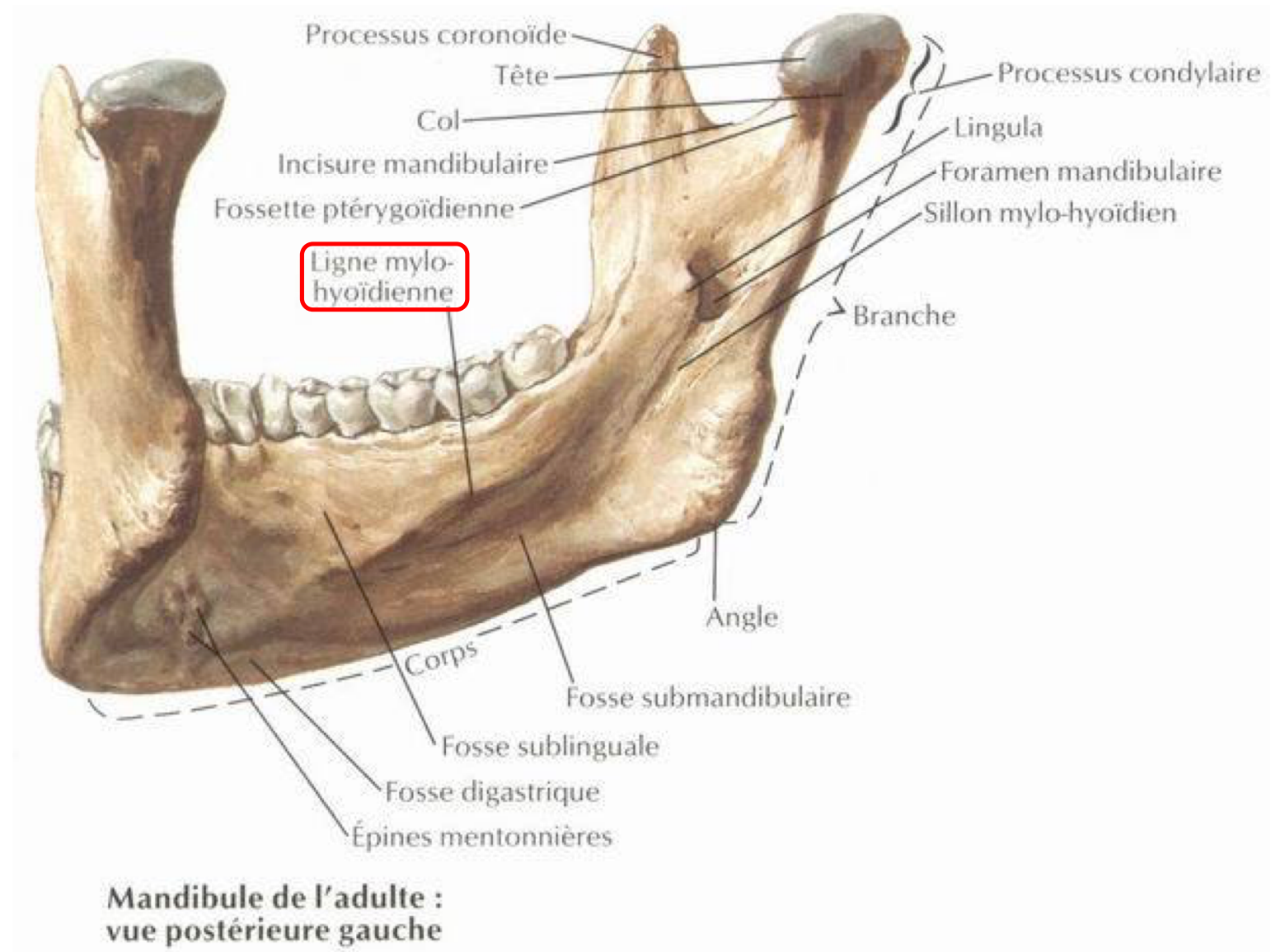


## Linea myelohyoidea

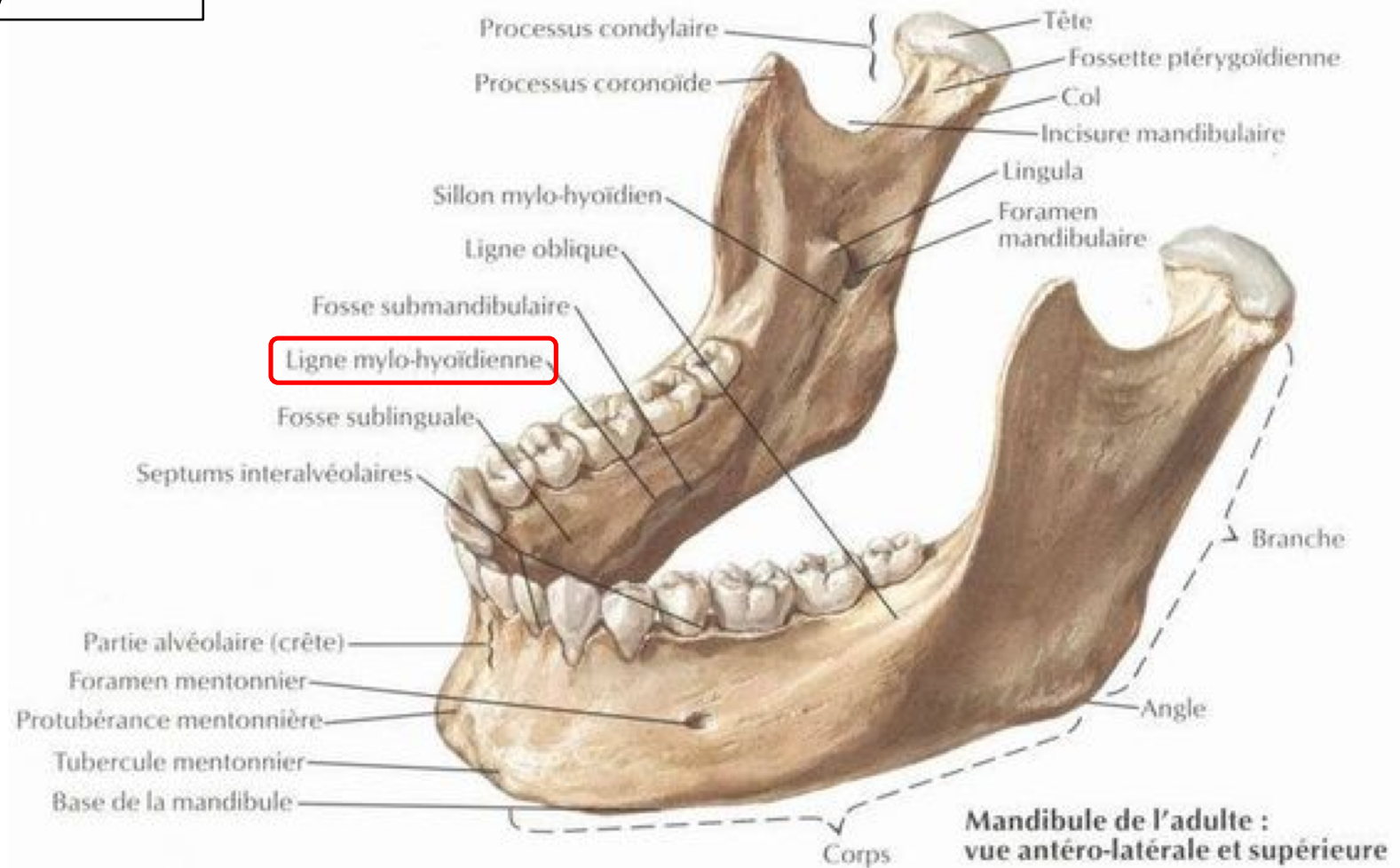


## Linea mylohyoidea

La **ligne mylo-hyoïdienne** est une crête osseuse.



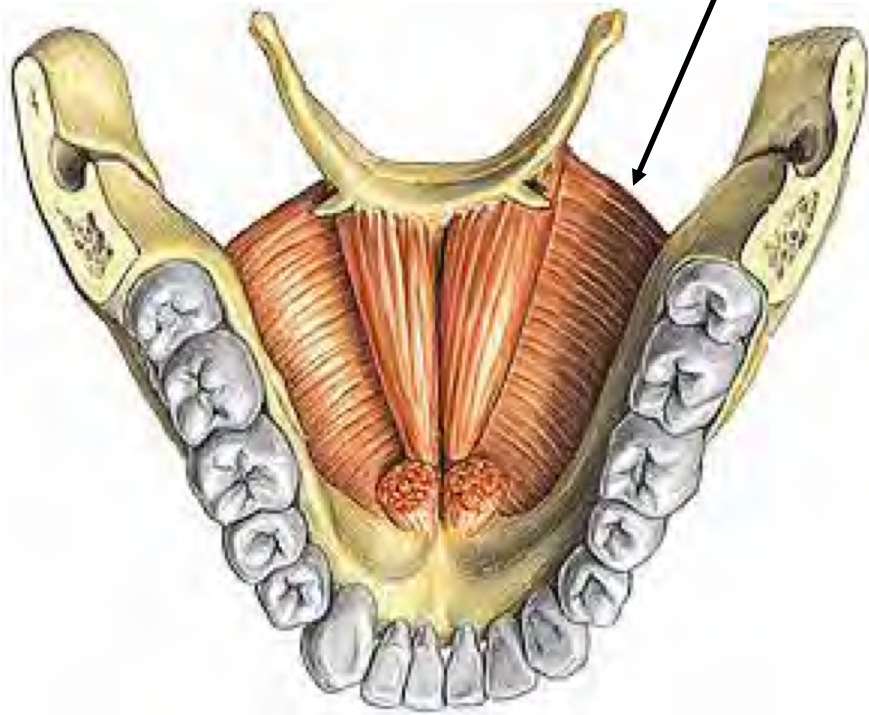
## La ligne mylo-hyoïdienne



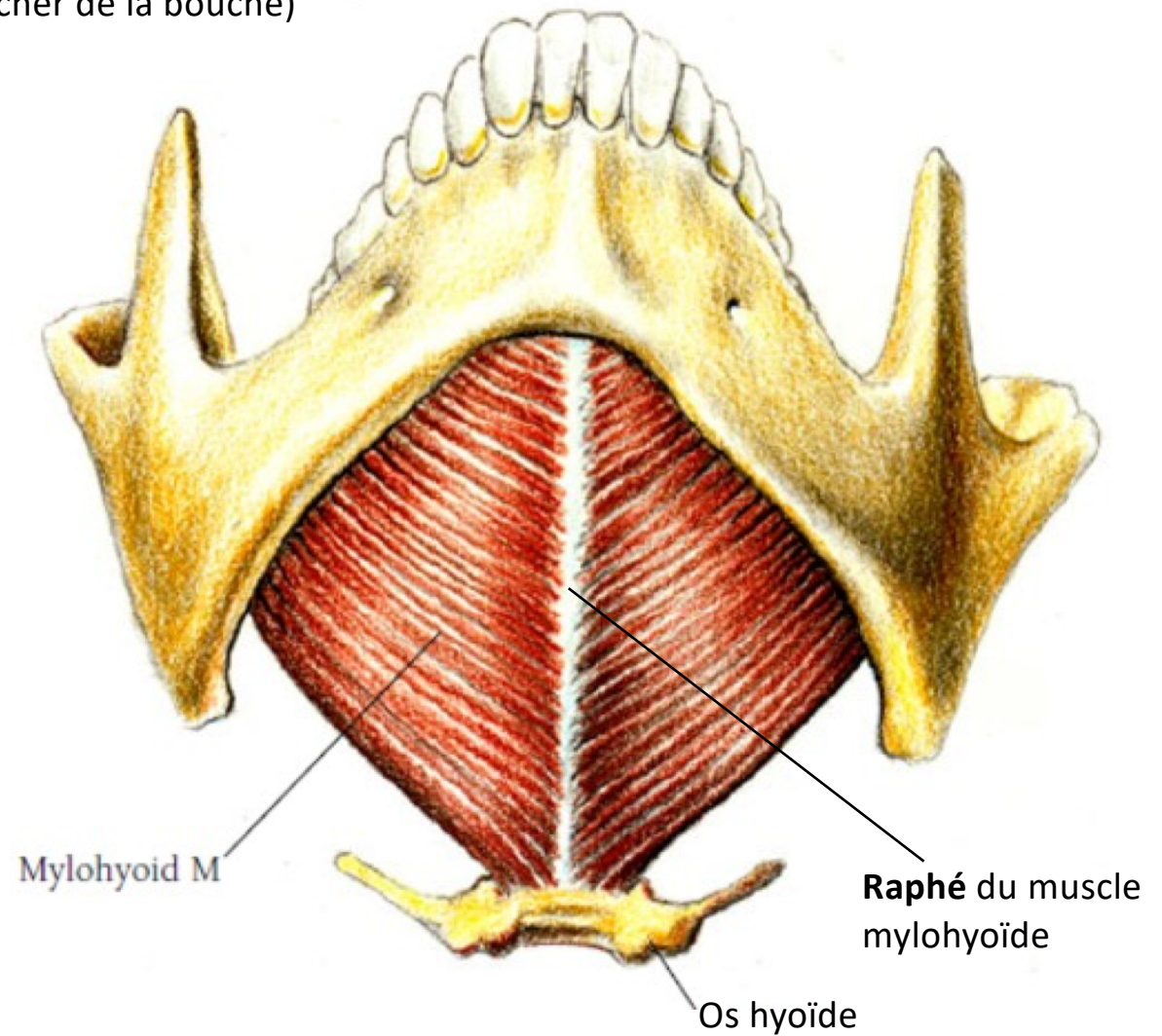
# 1. Le muscle mylohyoïdien

(plancher de la bouche)

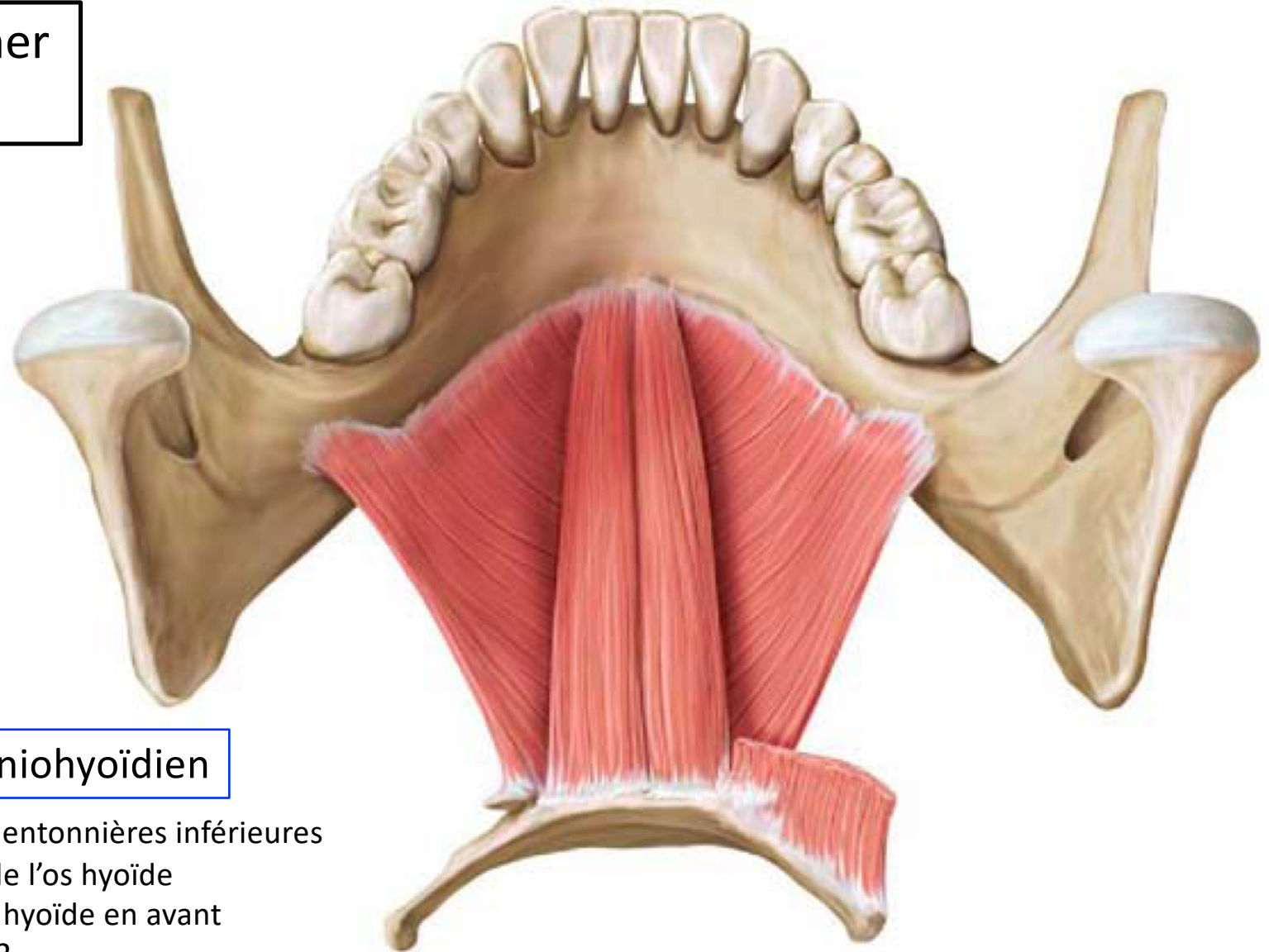
Muscle mylohyoïdien



Le bord postérieur du muscle mylohyoïdien  
contacte le corps de l'os hyoïde.

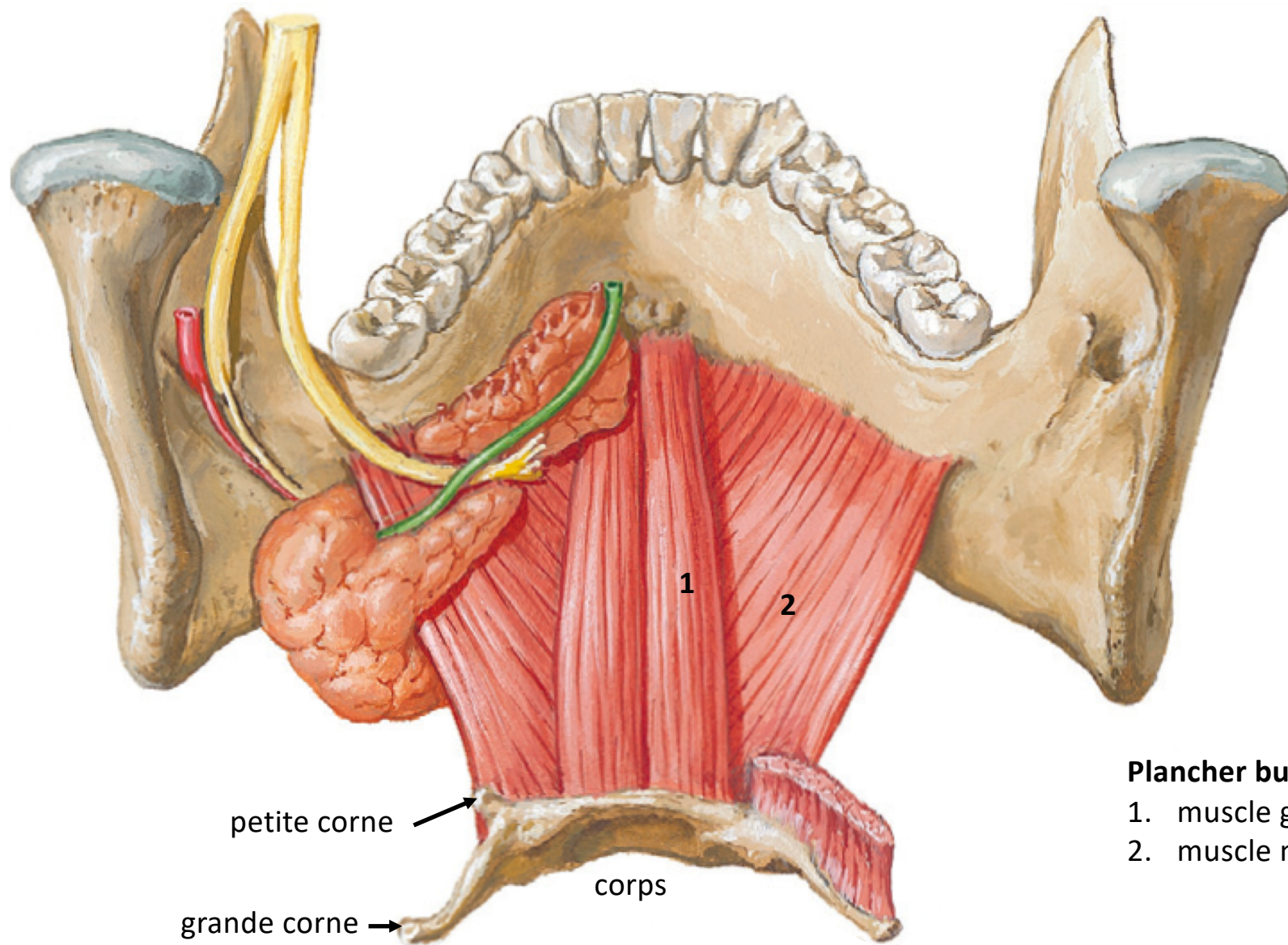


## Les muscles du plancher de la bouche



### 2. le muscle géniohyoïdien

- origine : épine mentonnière inférieure
- insertion : corps de l'os hyoïde
- fonction : tire l'os hyoïde en avant
- innervation: C1-C2



### **Plancher buccal**

1. muscle géniohyoïdien
2. muscle mylo-hyoïdien